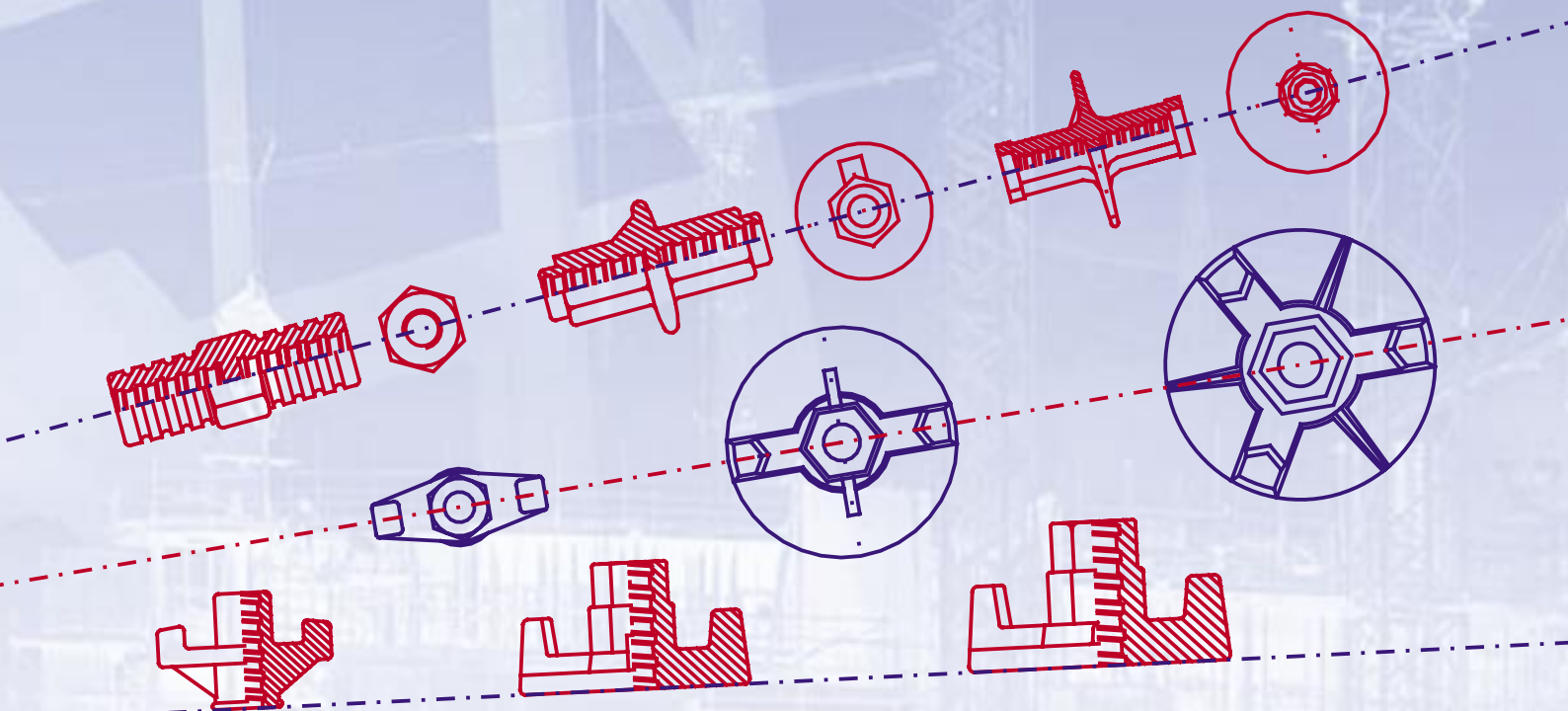


- 1 Transport Anchor System
- 2 Rebar Coupling System
- 3 Heavy & Light Expansion Anchors
- 4 Anchor Channels and Accessories
- 5 Formwork Accessories**
- 6 Powder Actuated Fastening System
- 7 Cable Tray System

Formwork Accessories





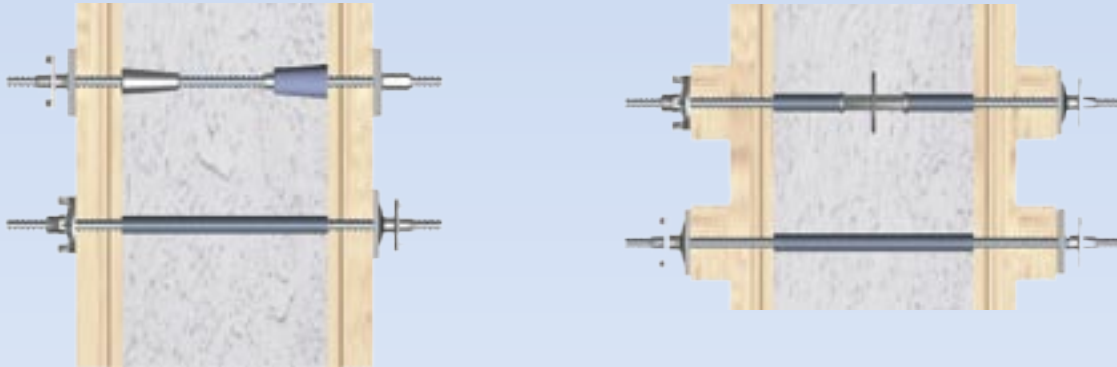
Part 5. Formwork Accessories

Introduction	5
Wing & Fly Nuts	5.1
Hex Coupler	5.2
Plates & Washers	5.3
Water Stops	5.4
Setting Cones	5.5
Tie Rod	5.6



5. Introduction

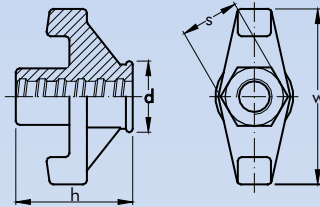
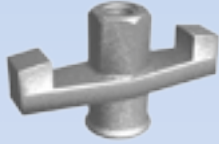
Mago provides a complete package of formwork accessories for both timber and steel formwork. We offer an economical and reliable solution where threaded joints with nuts or couplers are used in reinforced concrete and tying applications. Our products range from wing nuts, water stops, hex nut, couplers, and washers/plates to tie rods, all for the nominal thread diameter 15mm (DG 15/17). Other sizes of thread are available on request.





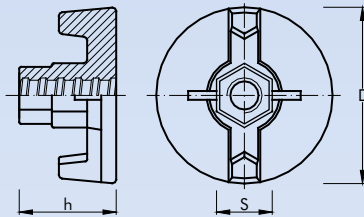
5.1 Wing & Fly Nuts

Wing Nut WNT



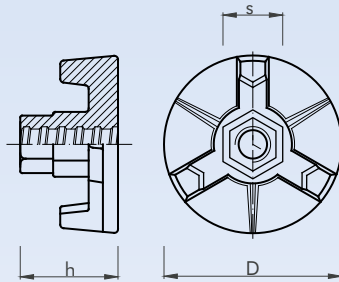
Material: GTW 45, galvanized		
Ref. No.	52101	52102
Working load	90 kN	90 kN
h	60 mm	60 mm
d	33 mm	40 mm
w	90 mm	90 mm
Hex size (s)	27 mm	30 mm
Unit weight	0.34 kg	0.41 kg

Flange Nut FTD



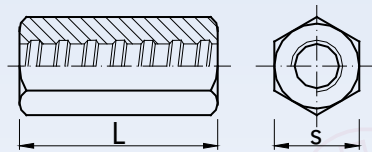
Material: GTW 45, galvanized	
Ref. No.	52201
Working load	90 kN
h	55 mm
D	Ø100 mm
Hex size (s)	27 mm
Unit weight	0.78 kg

Flange Nut FTS



Material: GTW 45, galvanized	
Ref. No.	52201
Working load	90 kN
h	55 mm
D	Ø100 mm
Hex size (s)	27 mm
Unit weight	0.78 kg

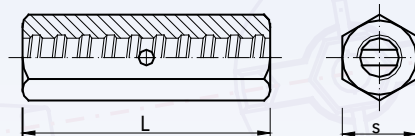
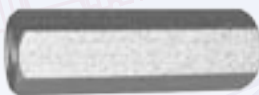
Hex Nut



Material: St 52, galvanized		
Ref. No.	52503	52506
Working load	90 kN	90 kN
L	50 mm	90 mm
Hex size (s)	30 mm	30 mm
Unit weight	0.22kg	0.41kg

5.2 Hex Couplers

Hex Coupler 90x30

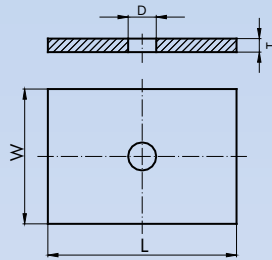
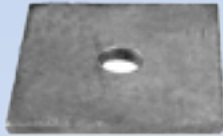


Material: St 52, galvanized	
Ref. No.	55101
Working load	90 kN
L	105mm
Hex size (s)	30 mm
Unit weight	0.44 kg



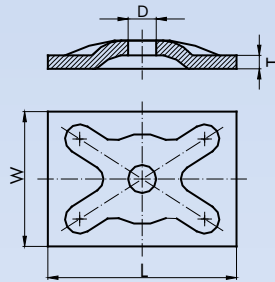
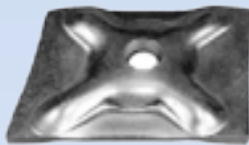
5.3 Plates & Washers

Bearing Plate TP



Material: St37 Steel plate	
Ref. No.	53101
Working load	90 kN
LxWxT (mm)	120x120x15
ØD (mm)	20
Unit weight	1.6 kg

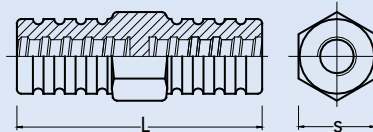
Bearing Washer TW



Material: St37 Steel plate	
Ref. No.	53201 53202
Working load	90 kN 90 kN
LxWxT (mm)	140x100x10 120x120x10
ØD (mm)	20 20
Unit weight	1.15 kg 1.1 kg

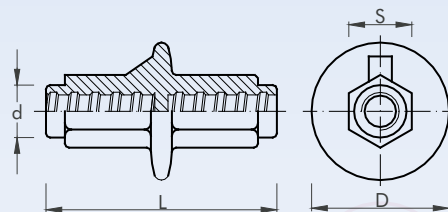
5.4 Water Stops

Water Stop WTS



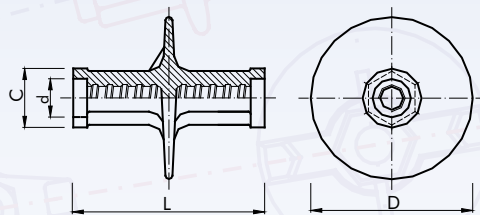
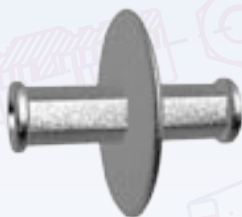
Material: GTW 45, galvanized	
Ref. No.	54101
Working load	90 kN
L	115 mm
Hex size (s)	36 mm
Unit weight	0.6 kg

Water Stop WTA



Material: GTW 45, galvanized	
Ref. No.	54201
Working load	90 kN
L	110 mm
Ød	26 mm
ØD	65 mm
Hex size (s)	30 mm
Unit weight	0.55 kg

Water Stop WTP

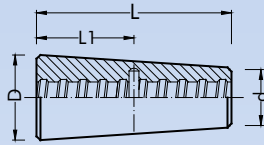


Material: GTW 45, galvanized	
Ref. No.	54301
Working load	90 kN
L	130 mm
d	Ø26 mm
C	Ø40 mm
D	Ø110 mm
Unit weight	0.98 kg



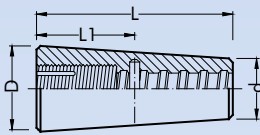
5.5 Setting Cones

Steel Cone SKS



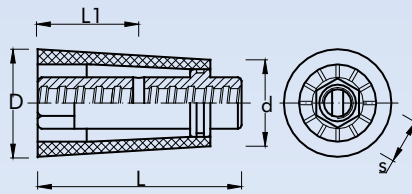
Material: St 52Galvanized	
Ref. No.	56101
Working load	90 kN
Ød	30 mm
ØD	44 mm
L	100 mm
L1	47 mm
Unit weight	0.59 kg

Steel Cone SKT



Material: St 52 Galvanized	
Ref. No.	56201
Working load	90 kN
Ød	30 mm
ØD	44 mm
L	100 mm
L1	47 mm
Unit weight	0.59 kg

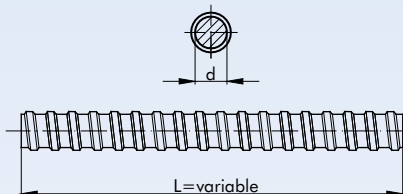
PVC-Steel Cone SKP



Material: St 52 Galvanized	
Ref. No.	56301
Working load	90 kN
Ød	46 mm
ØD	60 mm
L	110 mm
L1	55 mm
Hex size (s)	24 mm
Unit weight	0.47 kg

5.6 Tie Rod

Cold-Rolled Tie Rod



Ref. No.	51101
Working load	85 kN
Ultimate load	170 kN
Nom. diameter	15 mm
Unit weight	1.5 kg